



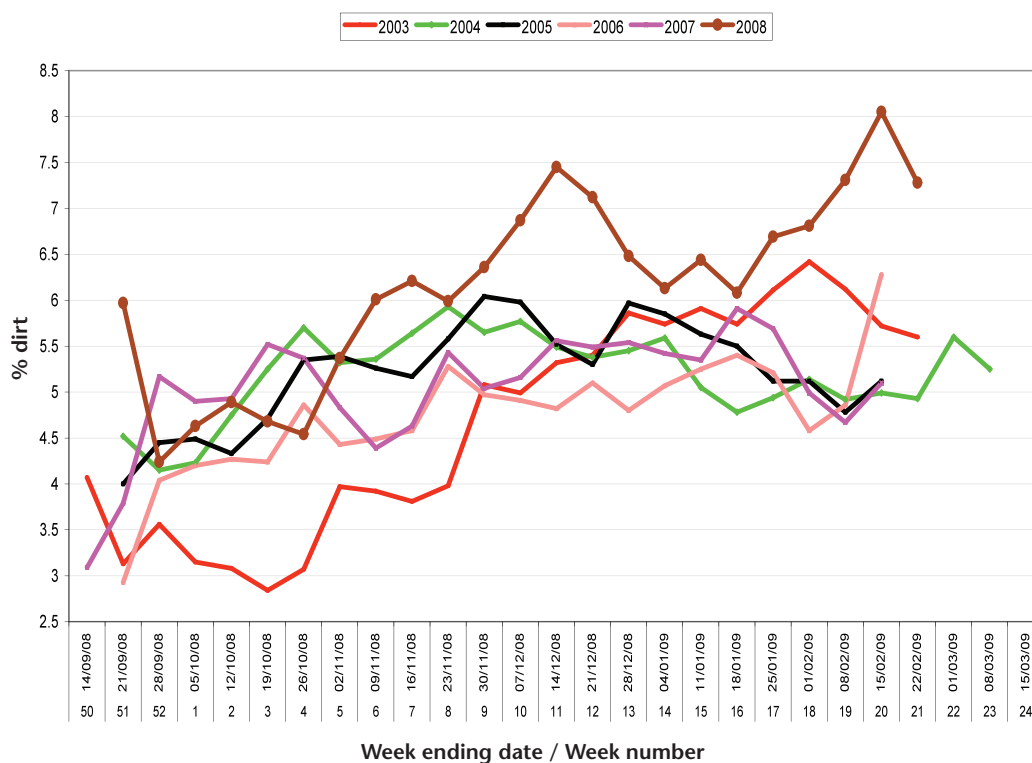
Less soil, less diesel

It is commonly believed that the season has the biggest influence on soil tare but recent independent research has shown that variety choice also has an important role to play. But how big an influence is dirt tare on the profitability of the crop?

The graph below is from the NFU Campaign Data 2008. It clearly shows the differences in dirt tare between campaigns and during a given campaign. In 2003, the range was 4.1 percent yet in 2004 it was only 1.6 percent. The average range over the six years is just under 3 percent.

The general trend of an increasing dirt percentage as the campaign progresses is similar for all the six campaigns illustrated. But there are significant differences with the 2003 campaign, which had the 'cleanest' start, finishing as one of the 'dirtiest' campaigns. And if you look at the figures for 2008 the dirt tare figures from December until the end of the campaign were much higher than previous campaigns.

Dirt percentage for current and 5 previous campaigns





Maribo Seed

Member of Nordzucker Group

The clean beet advantage

The concept of 'clean beet' was initiated and developed by Maribo Seed and is now a characteristic of all its varieties. These 'clean beet' varieties have a smoother surface and reduced root groove compared to standard varieties. This results in a much lower 'genetic' soil tare and can give a 50 percent reduction in soil tare compared to the standard varieties.

Independent trials conducted in conjunction with the Institute of Sugar Beet Research in Denmark, on the effect of 'clean beet' on the amount of soil transported to the factory revealed significant differences. Two standard varieties and two clean beet varieties were tested on six sites and sent to two different factories. The two clean beet varieties reduced the amount of transported soil by an average of 0.96 t/ha.

For a 20 ha crop, choosing clean beet varieties from Maribo Seed, such as Topper or Pondus could reduce the amount of soil removed from the field and transported to the factory by 19.2 tonnes.

By choosing these top sugar Recommended varieties, you are compounding the benefits of 'clean beet' and top sugar content and therefore using less diesel.

Topper and Pondus best choice for Top sugar, Clean beet, Low bolting.

For more information on these clean beet varieties visit www.maribo.com/uk



Topper PONDUS